

Analysis Oosterhoogebrug

Group 2





Content

- Space and mass
- Buildings by Functions
- Buildings by Year
- Buildings by Heights
- Functions in the area
- Iconic buildings
- Building types
- Architectural styles
- Sustainability
- Conclusion

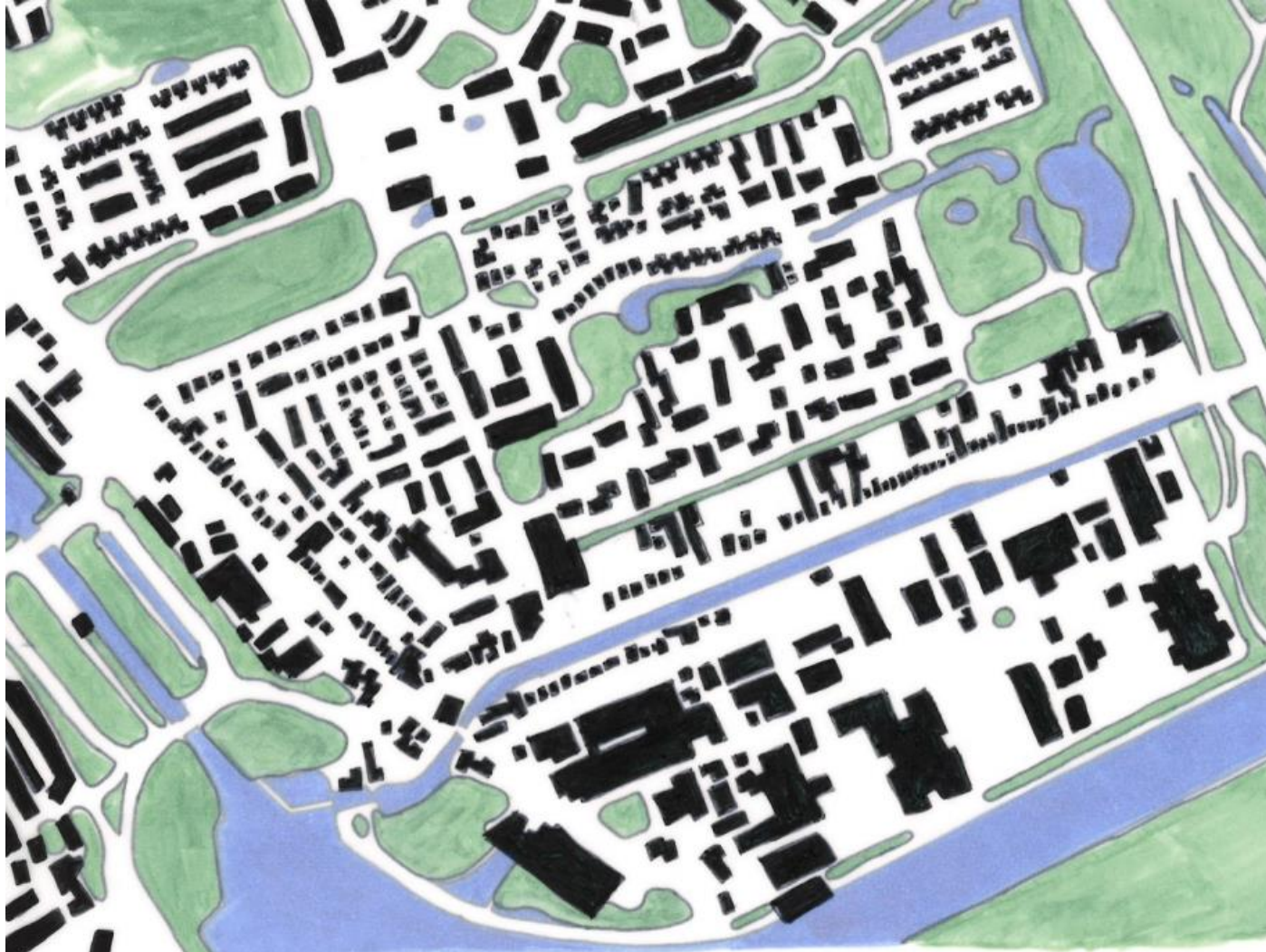
Space and mass



Densely built

Recognizable elements

Space and mass



Densely built

Recognizable elements

Space and mass



Large masses

Small masses

Buildings by Functions



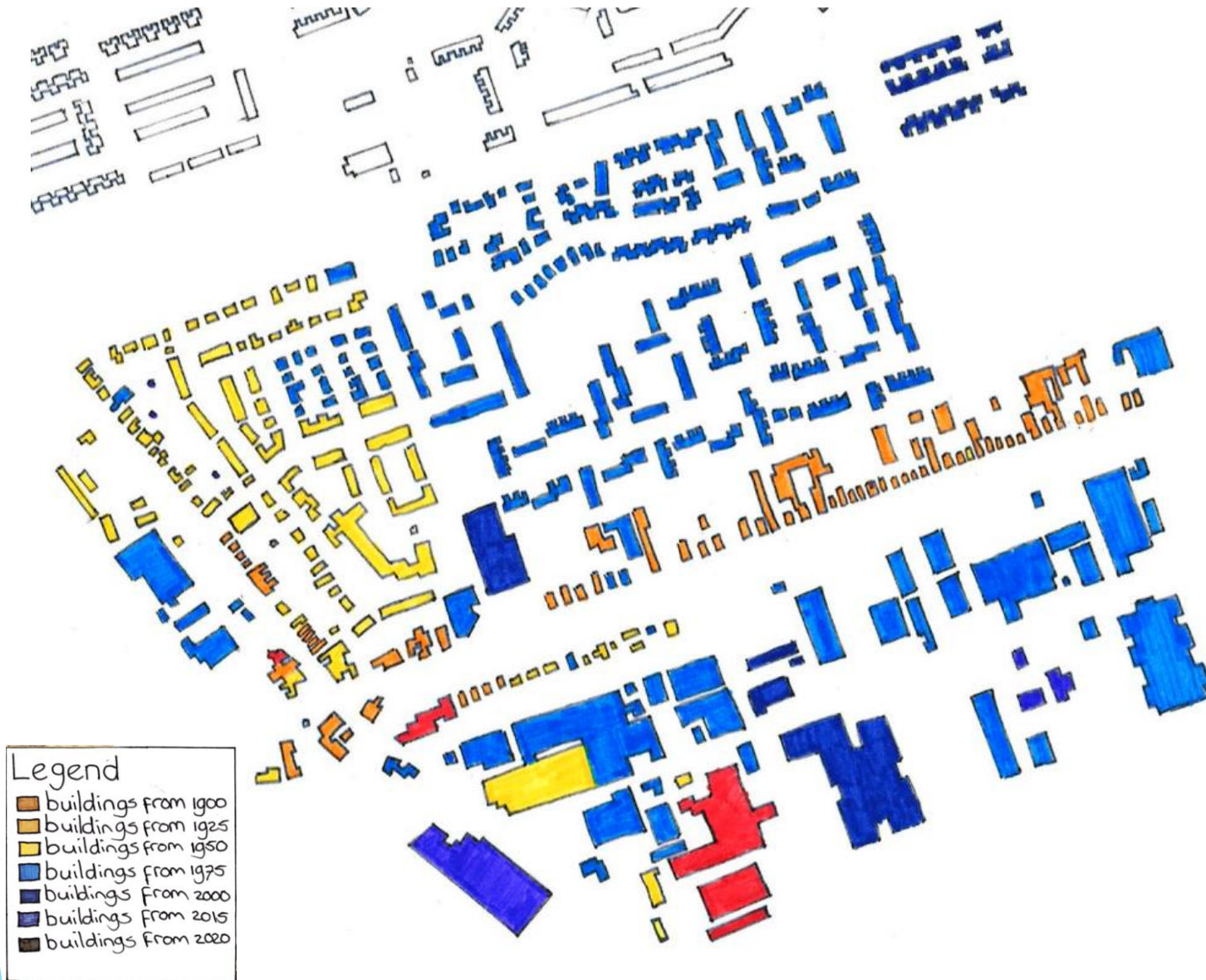
- Legend
- residential function
 - business function
 - mixed function
 - social function
 - retail function
 - service function

Location businesses

Location mixed functions

Location residential buildings

Buildings by Year



Farms built around 1900

Ribbon village

Expansion

Tasmantoren

Building by heights



Connection mass and height

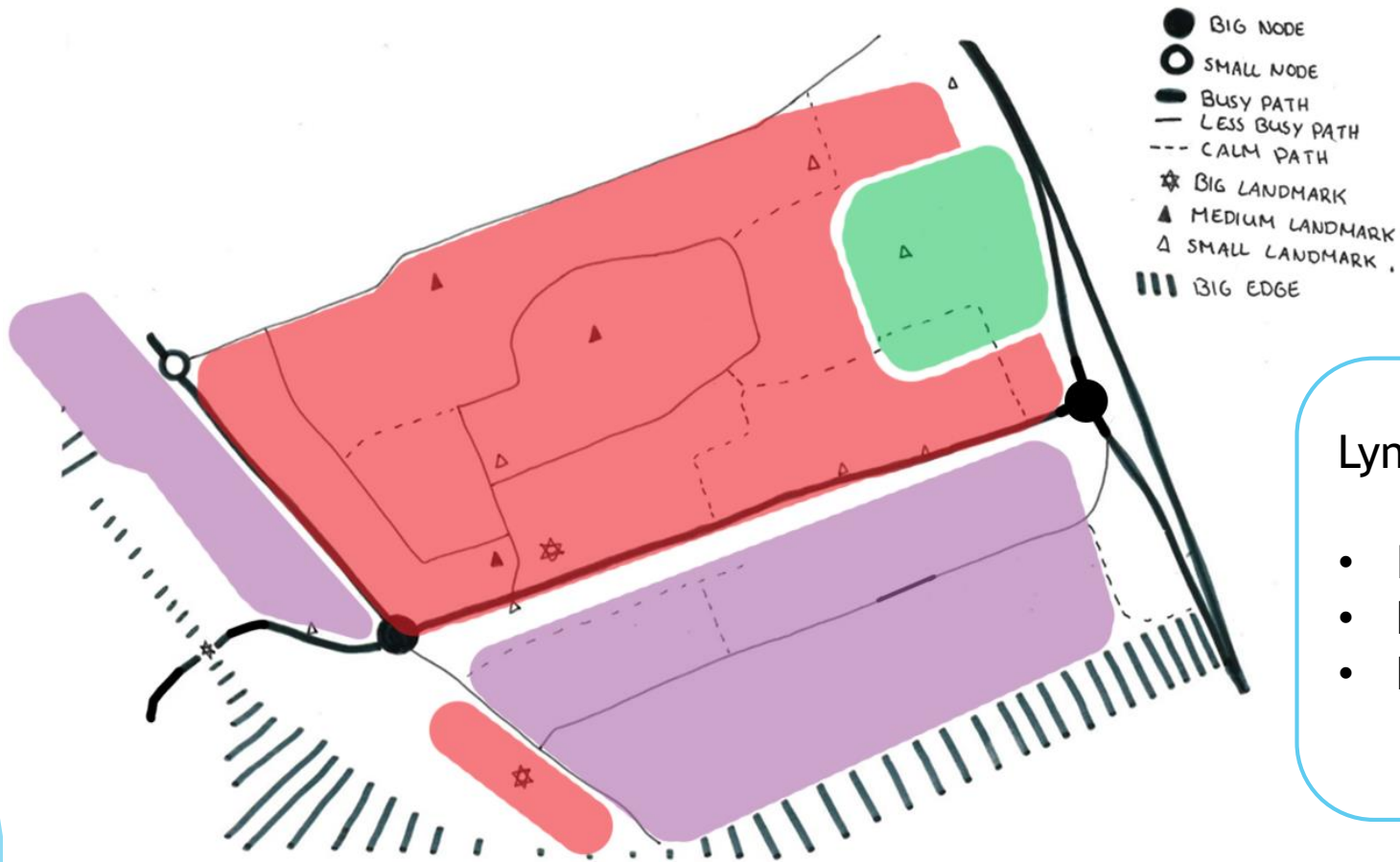
Tasmantoren

Legend

- 15+ metres high
- 12-15 metres high
- 9-12 metres high
- 6-9 metres high
- 3-6 metres high
- 0-3 metres high

* Measured from highest point

Functions in the area



Lynch

- Industrial
- Residential
- Recreational green

Iconic buildings



Tasmantoren

- High building (stands out)
- New and modern
- Shape of a caterpillar



Iconic buildings



Albert Heijn

- Striking colour
- Only supermarket in the neighbourhood
- Meeting place



Farm house

- Open area around the building
- Used to point out a location (Beyond the farm house, then to the right)

Iconic Landmark

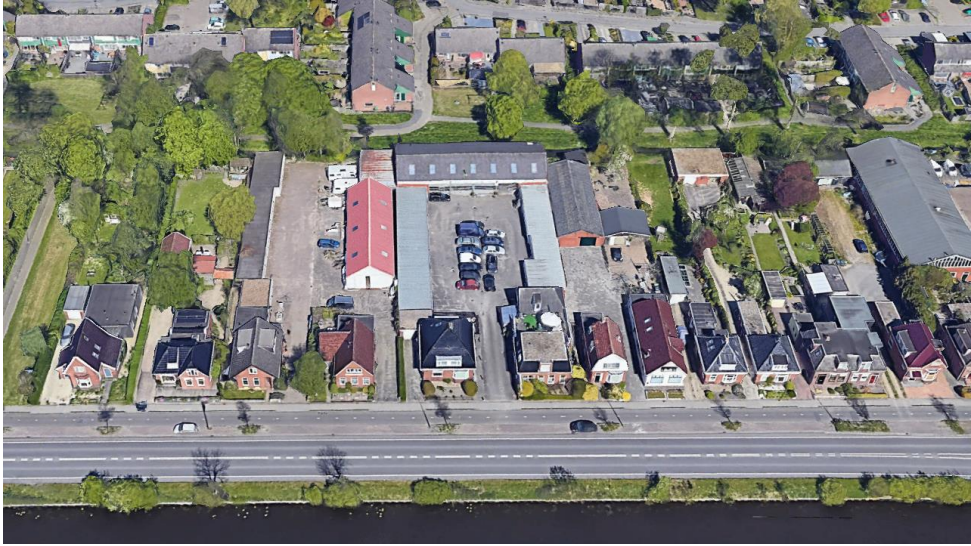


The Block

- Meeting place
- Recreational (Football)
- Memorial place



Neighbourhood structure



Detached, 1915 - 1935

Ribbon-structure next to the Damsterdiep

Varying houses which are often combined with a company



Detached, 1979 - 1982

Cauliflower pattern

Different styles due to free choice

Building types



Semi-detached, 1978

Structured following the street, facing towards the street



Semi-detached, 1997

Structured in straight lines, facing towards the street

Building types



Terraced, 1951

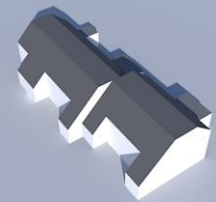
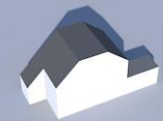
Structured in straight lines,
facing towards the street
1000 houses plan



Terraced, 1977

Varying orientation of houses

Single design which is linked up and
mirrored, façades are not on the same
construction line



Architectural styles



- Old village
- Rent and buy houses
- 1000 houses plan in Groningen

Building types



Highrise, 2010

Modern architecture, isolated from the neighbourhood



Industrial Warehouses, 1963-1997

Large footprint due to the function

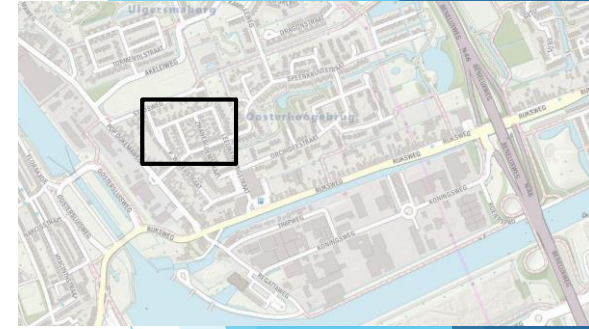
Slightly arched or flat rooftops

Older buildings have walls of red bricks, newer buildings are metal shells

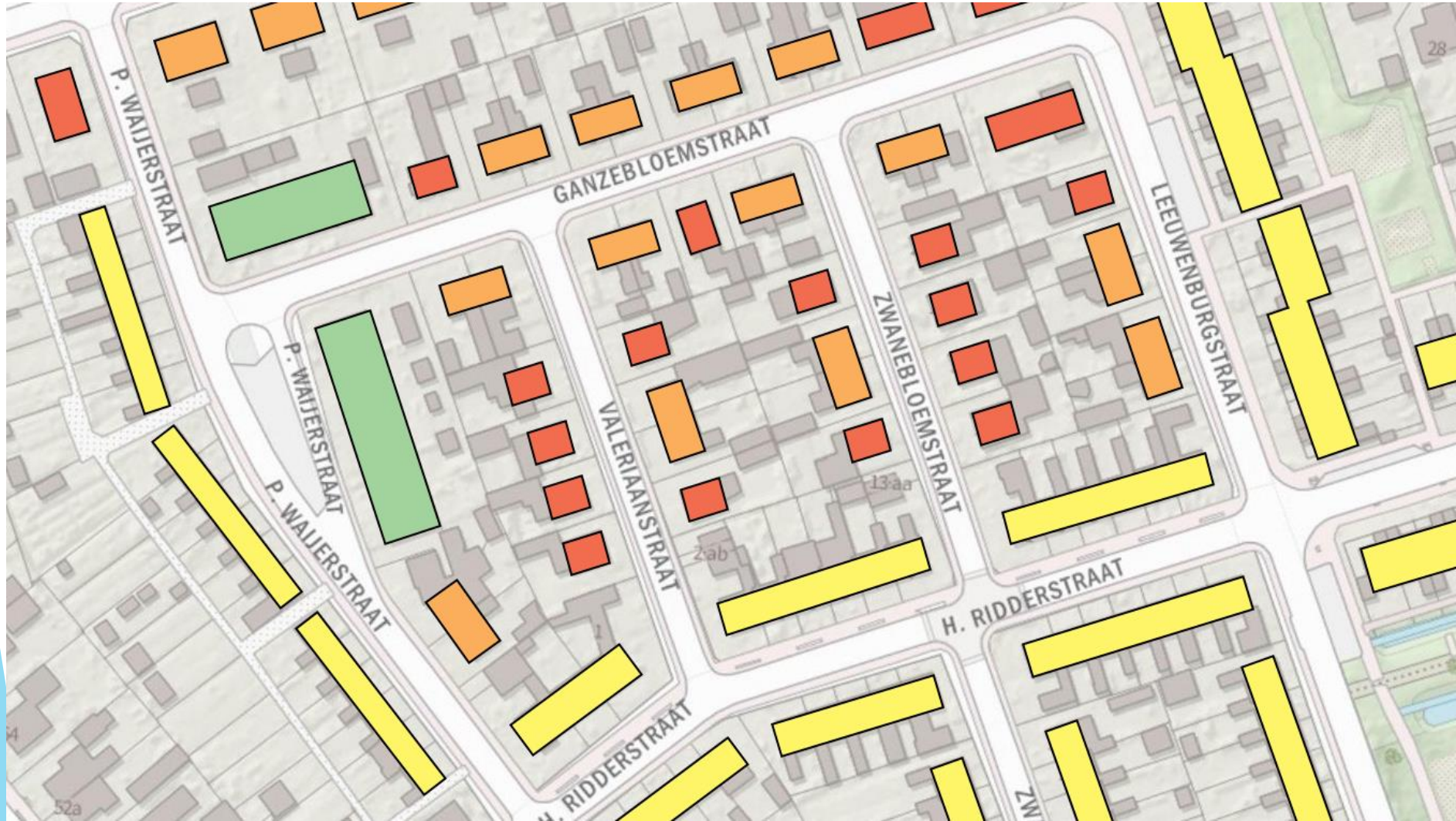
Building types



Building types

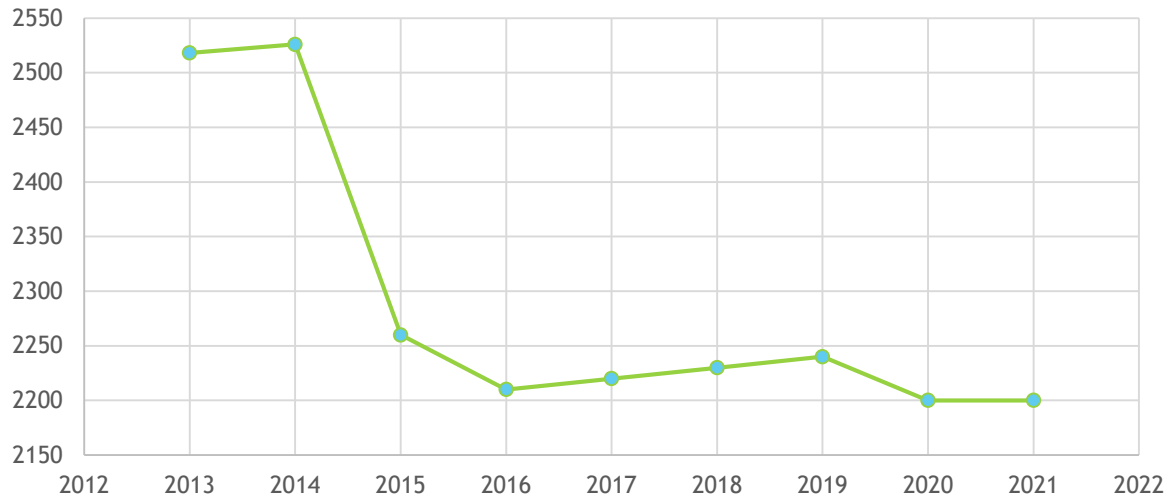


Building types

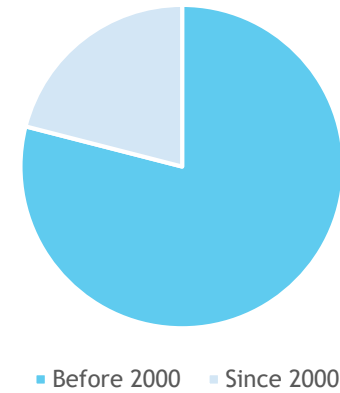


Typology Oosterhogebrug

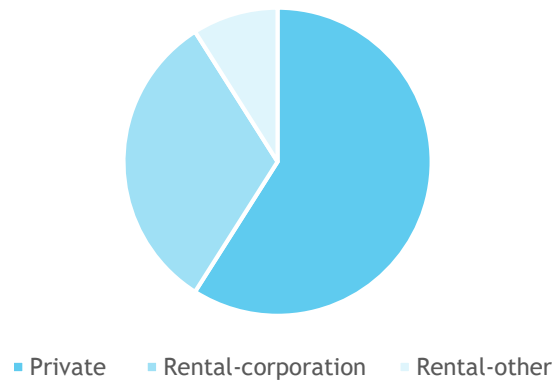
Population numbers per year



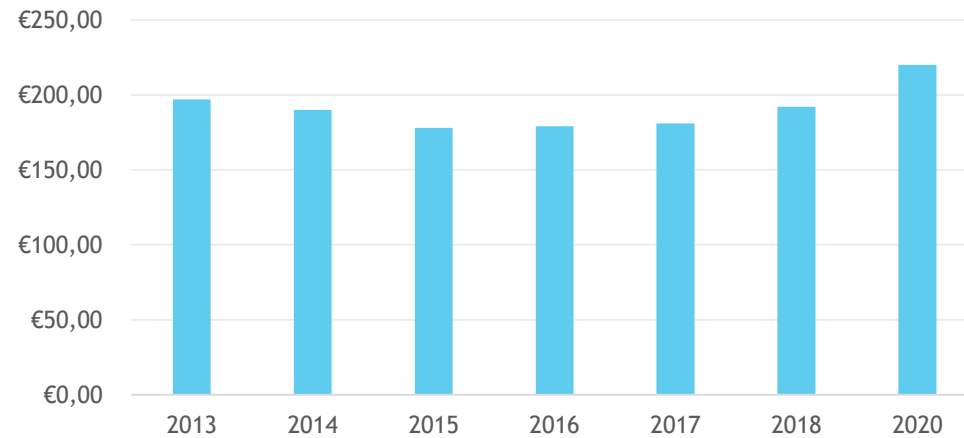
Construction year of the houses



Ownerships houses in Oosterhogebrug



Average value of houses



Sustainability



- Renovation of 220 houses
- Solarpanels
- Working with the residents
- Parks to prevent from heatstress



The end

Thank you for your attention!

